



**Noise Monitoring Result**

**Day Time (0700 - 1900hrs on normal weekdays)**

Location: M1a - Harbour Road Sports Centre

Date	Time	Weather	Measurement Noise Level			Baseline Level	Construction Noise Level	Limit Level
			Leq	L10	L90	Leq	Leq	Leq
Unit: dB(A), (30-min)								
29/09/14	10:45	Fine	72.2	75.0	67.0	72	72	75
07/10/14	8:50	Fine	73.5	76.0	68.0	72	68	75
13/10/14	16:35	Fine	74.5	76.5	69.0	72	71	75
21/10/14	10:31	Fine	73.7	76.5	69.0	72	68	75
27/10/2014	16:50	Fine	74.8	76.5	70.5	72	71	75

Location: M2b - Noon-day gun area

Date	Time	Weather	Measurement Noise Level			Baseline Level	Construction Noise Level	Limit Level
			Leq	L10	L90	Leq	Leq	Leq
Unit: dB(A), (30-min)								
29/09/14	11:30	Fine	73.8	77.0	65.5	68	73	75
07/10/14	9:40	Fine	72.0	74.0	68.0	68	70	75
14/10/14	10:25	Fine	72.0	73.0	67.5	68	70	75
21/10/14	11:15	Fine	73.3	75.5	67.5	68	72	75
28/10/14	10:19	Fine	69.6	70.5	67.5	68	65	75

Location: M3a - Tung Lo Wan Fire Station

Date	Time	Weather	Measurement Noise Level			Baseline Level	Construction Noise Level	Limit Level
			Leq	L10	L90	Leq	Leq	Leq
Unit: dB(A), (30-min)								
29/09/14	13:10	Fine	66.0	67.0	63.5	69	66	75
07/10/14	10:30	Fine	66.7	68.0	63.5	69	67	75
14/10/14	11:10	Fine	67.5	68.5	65.0	69	68	75
21/10/14	13:00	Fine	66.4	67.5	65.0	69	66	75
28/10/2014	11:03	Fine	68.0	69.0	65.0	69	68	75

Location: M4b - Victoria Centre

Date	Time	Weather	Measurement Noise Level			Baseline Noise Level	Construction Noise Level	Limit Level
			Leq	L10	L90	Leq	Leq	Leq
Unit: dB(A), (30min)								
29/09/14	13:50	Cloudy	68.4	69.5	66.1	67	62	75
07/10/14	11:15	Fine	68.1	68.5	66.0	67	60	75
14/10/14	13:00	Fine	74.2	79.0	69.0	67	73	75
21/10/14	13:44	Fine	70.0	71.5	67.5	67	67	75
28/10/2014	13:03	Fine	69.0	69.5	66.0	67	64	75

Location: M5b - City Garden

Date	Time	Weather	Measurement Noise Level			Baseline Level	Construction Noise Level	Limit Level
			Leq	L10	L90	Leq	Leq	Leq
Unit: dB(A), (30min)								
29/09/14	14:40	Cloudy	70.3	71.0	69.0	68	66	75
07/10/14	13:00	Fine	70.2	71.0	68.5	68	66	75
14/10/14	13:50	Fine	71.5	72.0	68.5	68	69	75
21/10/14	14:26	Fine	72.5	74.5	69.5	68	71	75
28/10/2014	13:53	Fine	69.4	70.0	67.5	68	64	75

Location: M6 - HK Baptist Church Henrietta Secondary School

Date	Time	Weather	Measurement Noise Level			Baseline Level	Construction Noise Level	Limit Level
			Leq	L10	L90	Leq	Leq	Leq
Unit: dB(A), (30-min)								
29/09/14	15:30	Cloudy	71.3	72.0	68.5	71	62	70
07/10/14	13:50	Fine	71.8	73.5	69.0	71	65	70
14/10/14	14:30	Fine	73.1	73.5	70.0	71	69	70
21/10/14	15:30	Fine	71.4	73.0	69.0	71	63	70
28/10/14	14:37	Fine	71.5	73.0	68.5	71	64	70



**Noise Monitoring Result**

**Day Time (0700 - 1900hrs on normal weekdays)**

Location: M7e - International Finance Centre (Eastern End of Podium) (Reference Station)

Date	Time	Weather	Measurement Noise Level			Baseline Level	Construction Noise Level	Limit Level
			Leq	L10	L90	Leq	Leq	Leq
Unit: dB(A), (30-min)								
30/09/14	14:00	Cloudy	67.8	70.0	64.5	67	61	N/A
07/10/14	15:10	Fine	68.2	69.5	64.5	67	63	N/A
13/10/14	14:15	Fine	68.1	69.5	65.5	67	62	N/A
21/10/14	8:56	Fine	72.6	74.0	70.5	67	71	N/A
27/10/2014	14:16	Fine	70.9	73.0	67.0	67	69	N/A

Location: M7w - International Finance Centre (Western End of Podium)

Date	Time	Weather	Measurement Noise Level			Baseline Level	Construction Noise Level	Limit Level
			Leq	L10	L90	Leq	Leq	Leq
Unit: dB(A), (30-min)								
30/09/14	14:35	Cloudy	64.9	66.0	62.0	69	65	75
07/10/14	15:50	Fine	67.3	68.5	63.5	69	67	75
13/10/14	14:50	Fine	66.2	68.0	63.0	69	66	75
21/10/14	9:33	Fine	65.3	66.5	65.0	69	65	75
27/10/14	14:54	Fine	66.4	68.0	64.0	69	66	75

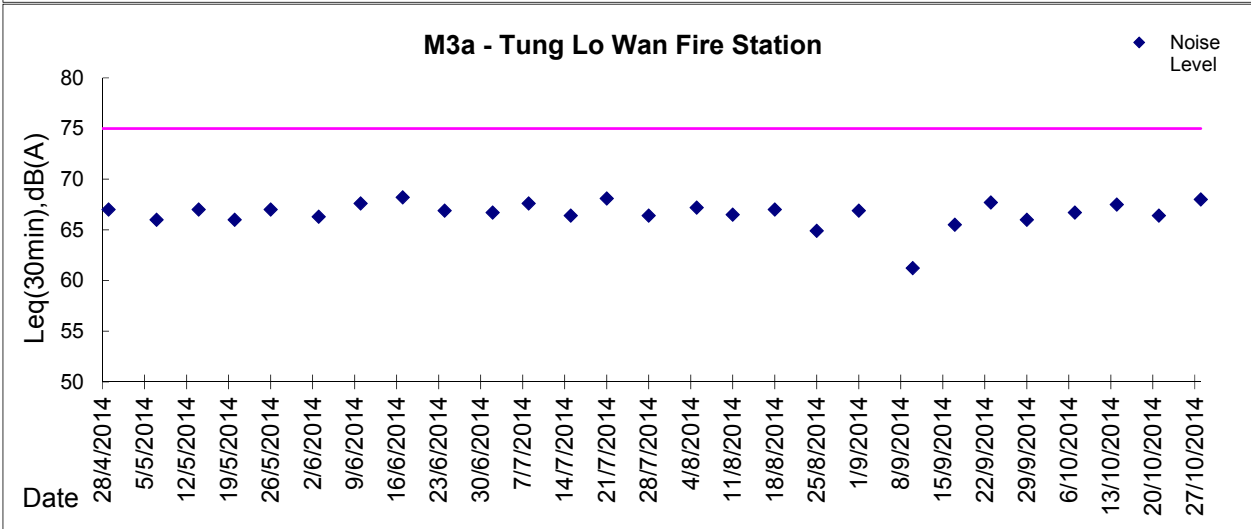
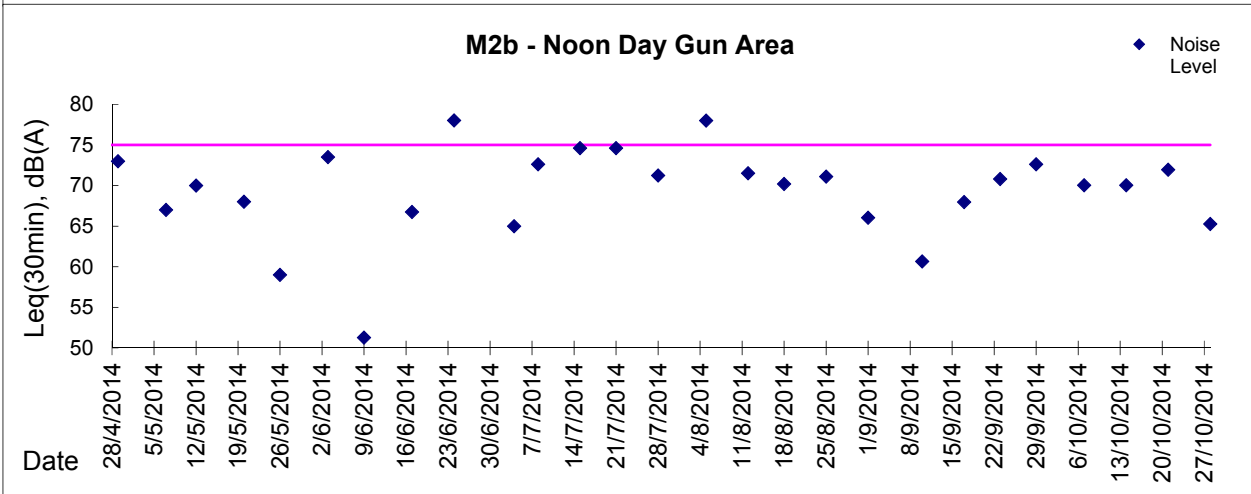
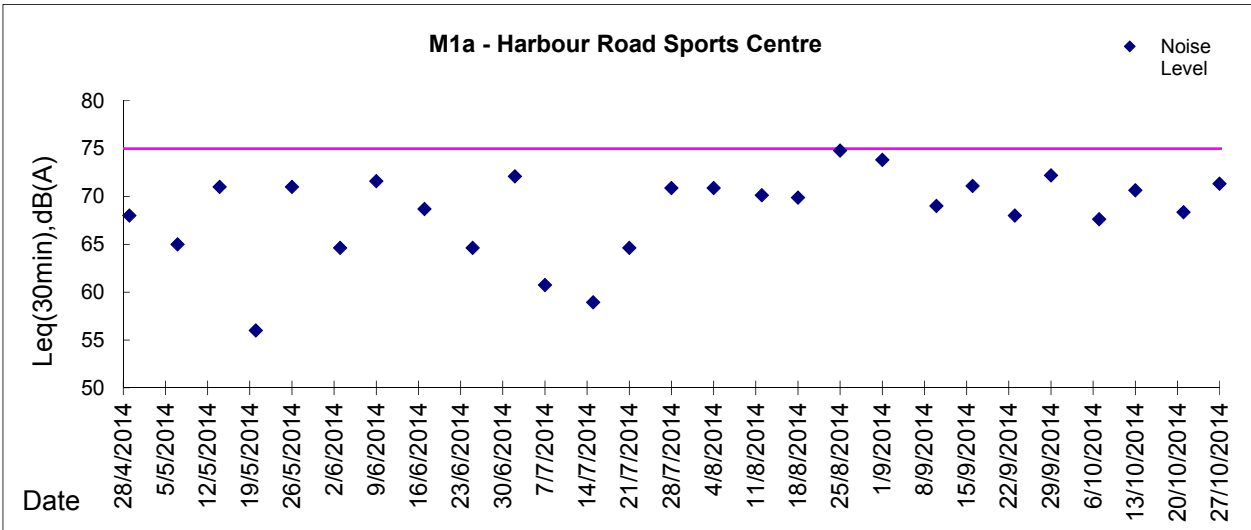
Location: M8 - City Hall

Date	Time	Weather	Measurement Noise Level			Baseline Level	Construction Noise Level	Limit Level
			Leq	L10	L90	Leq	Leq	Leq
Unit: dB(A), (30-min)								
30/09/14	15:25	Cloudy	60.8	62.5	56.0	64	61	70
07/10/14	16:35	Fine	61.5	62.0	56.5	64	62	70
13/10/14	15:30	Fine	61.8	63.0	60.0	64	62	70
20/10/14	11:05	Fine	62.8	64.0	59.0	64	63	70
27/10/14	15:48	Fine	61.8	63.5	59.0	64	62	70



**Graphic Presentation of Noise Monitoring Result**

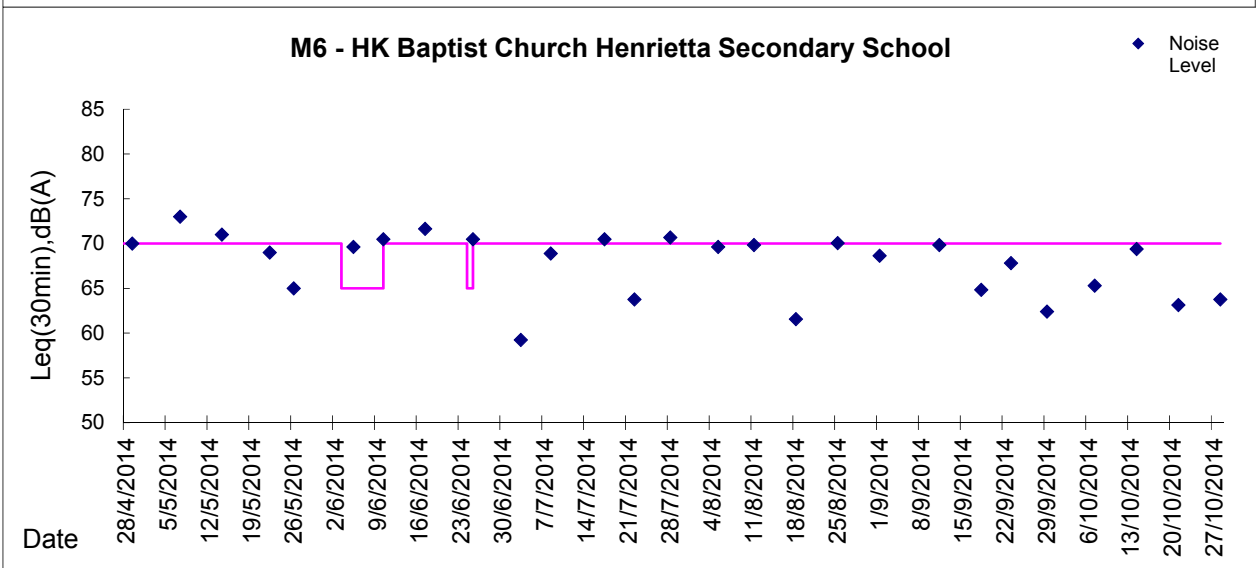
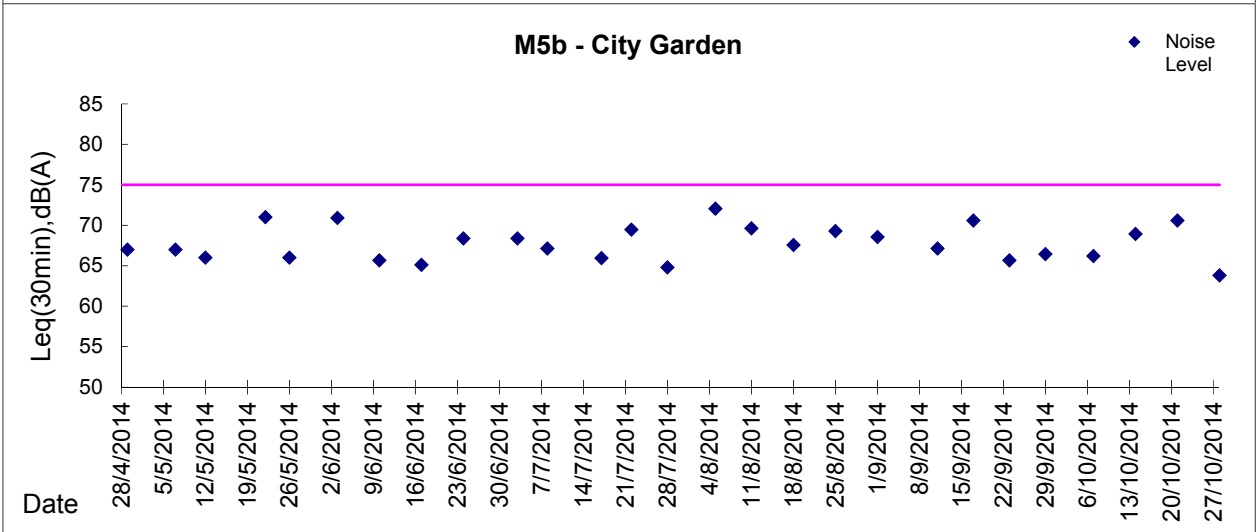
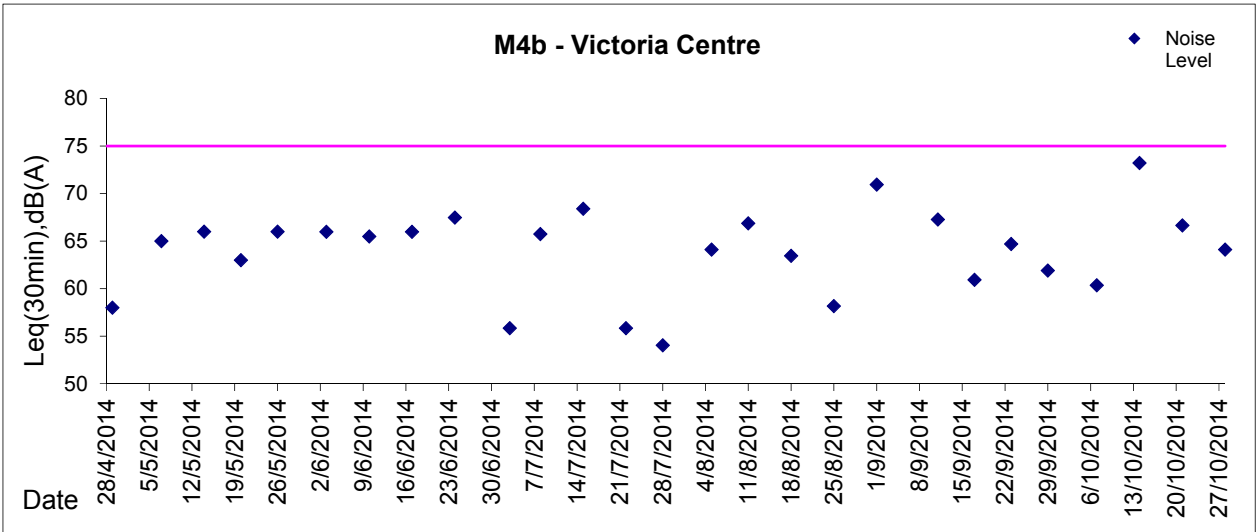
**Day Time (0700 - 1900hrs on normal weekdays)**





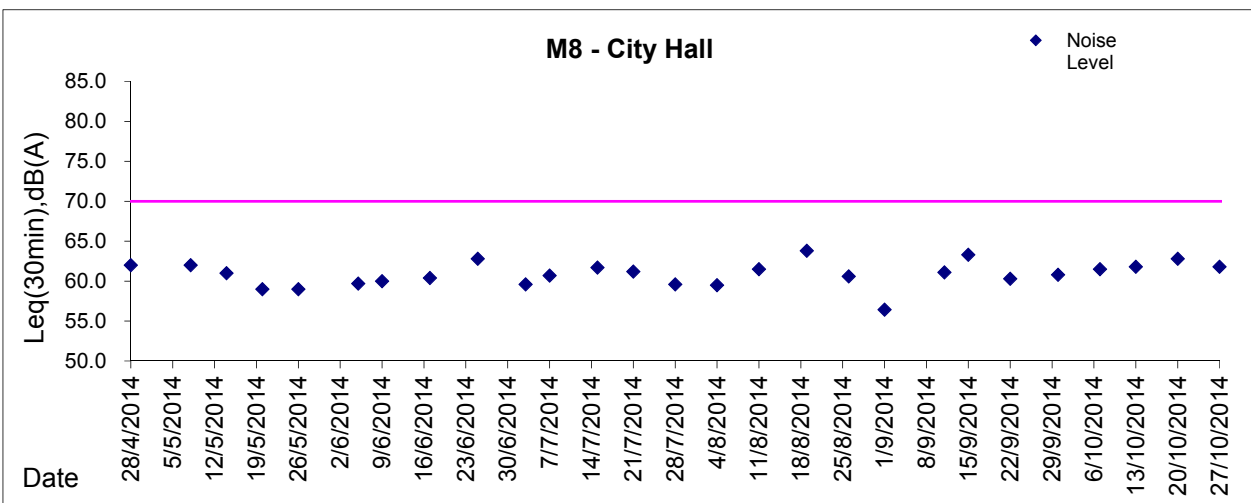
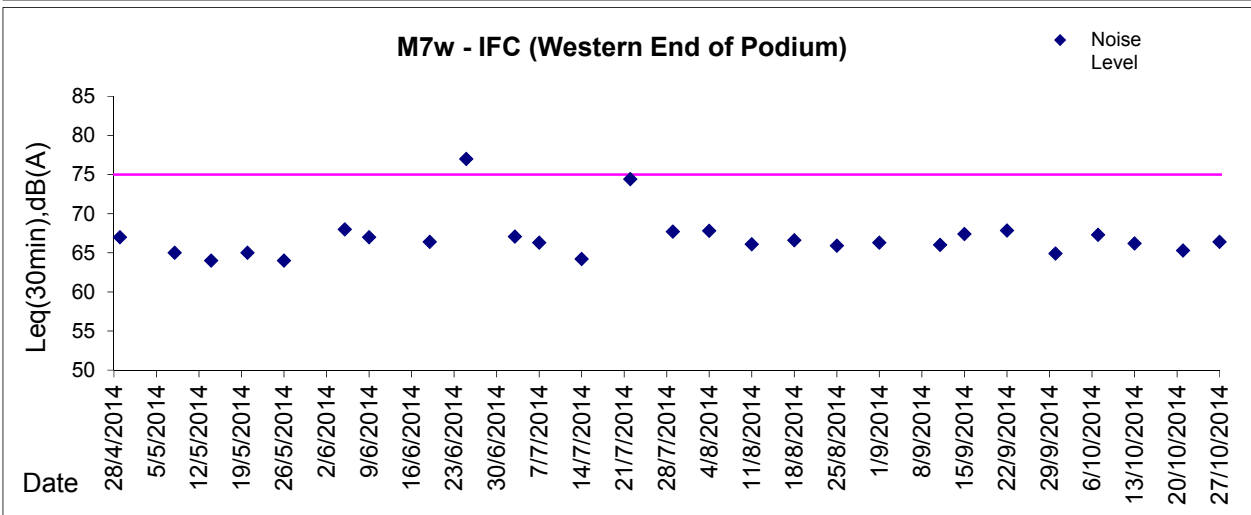
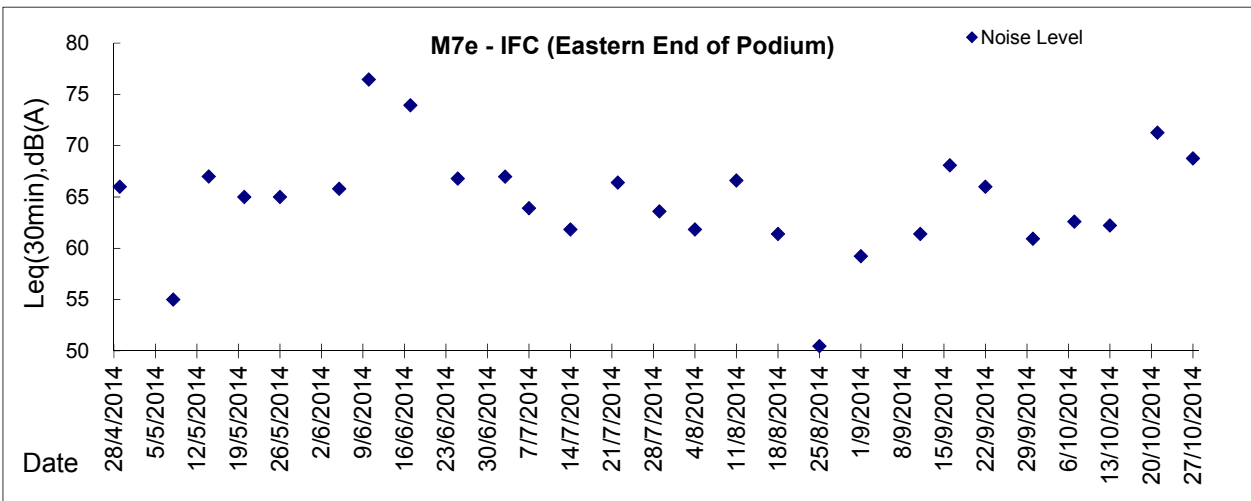
Graphic Presentation of Noise Monitoring Result

Day Time (0700 - 1900hrs on normal weekdays)





**Graphic Presentation of Noise Monitoring Result**  
**Day Time (0700 - 1900hrs on normal weekdays)**



\* Remark: M7e - IFC (Eastern End of Podium) is a reference monitoring station